

ELM PLAZA

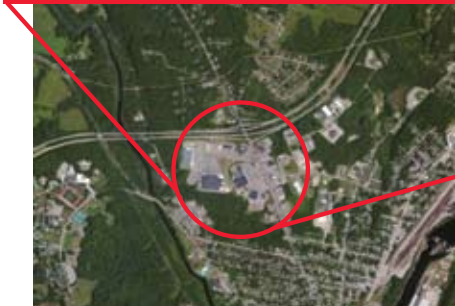
SHOPPING CENTER

Waterville, Maine • Just off Interstate 95



The Elm Plaza Shopping Center is located on Main Street in the heart of Waterville's Best Retail corridor just off of Interstate 98.

It has approximately 296,126 Square Feet of Retail Space with a J C Penney, K Mart and Hannaford Supermarket as well as many fine small store. The Main Street area has over 1,000,000 Square Feet of Retail including a Super Wal Mart, Home Depot, Staples, and Ruby Tuesday!



Right off the I-95 Ramp

Located in a busy retail district

Contact: Maine Crossroads LLC

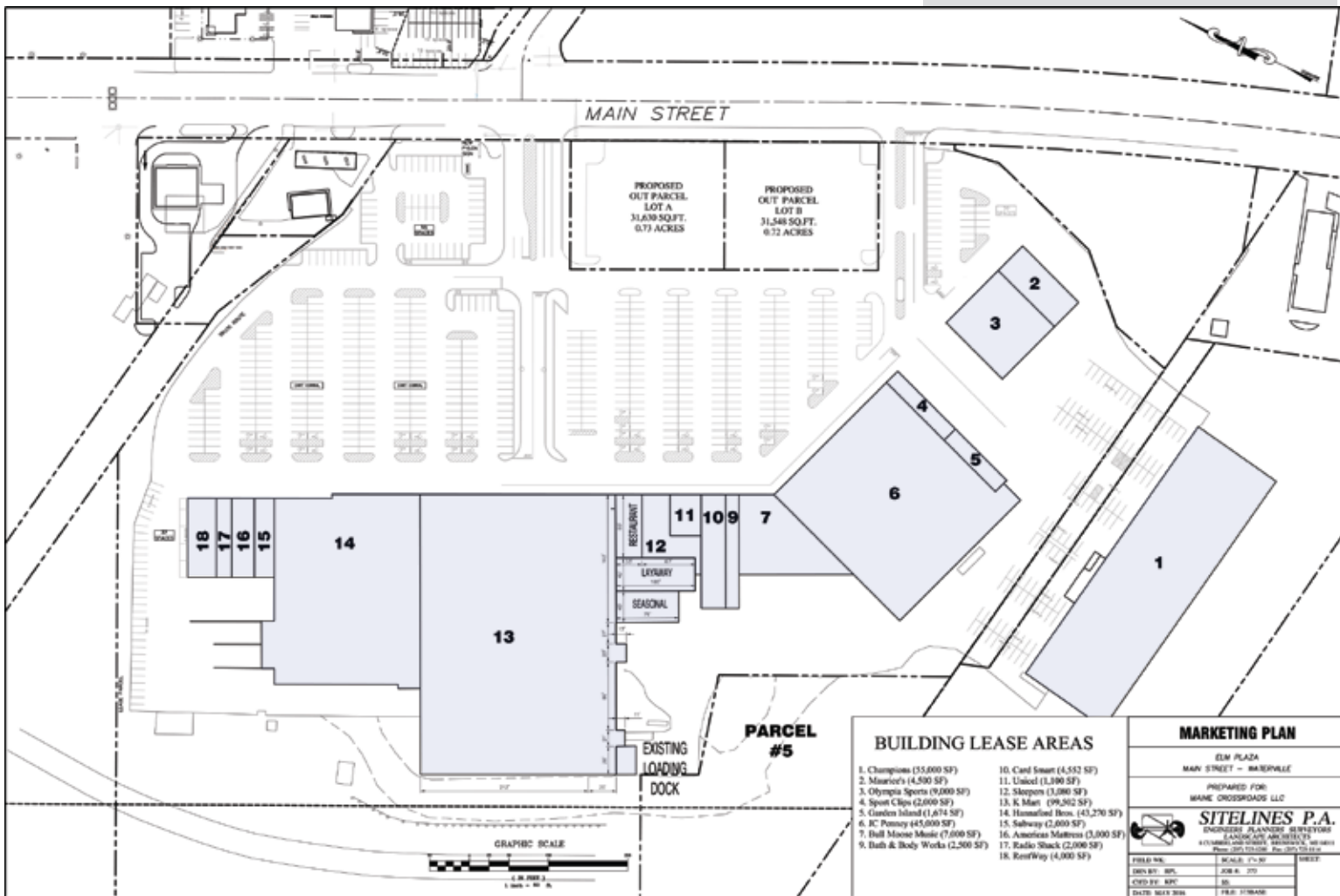
Andy Rosenthal

Cell 207 415 0846

www.mainecrossroads.com • andy@mainecrossroads.com



Detailed property overview



In addition to the all of the great stores already on the property, the shopping center also features:

- > 29 acres of land
- > 904 parking places
- > Center has room for expansion

Contact: Maine Crossroads LLC
 Andy Rosenthal
 Cell 207 415 0846
www.mainecrossroads.com • andy@mainecrossroads.com

